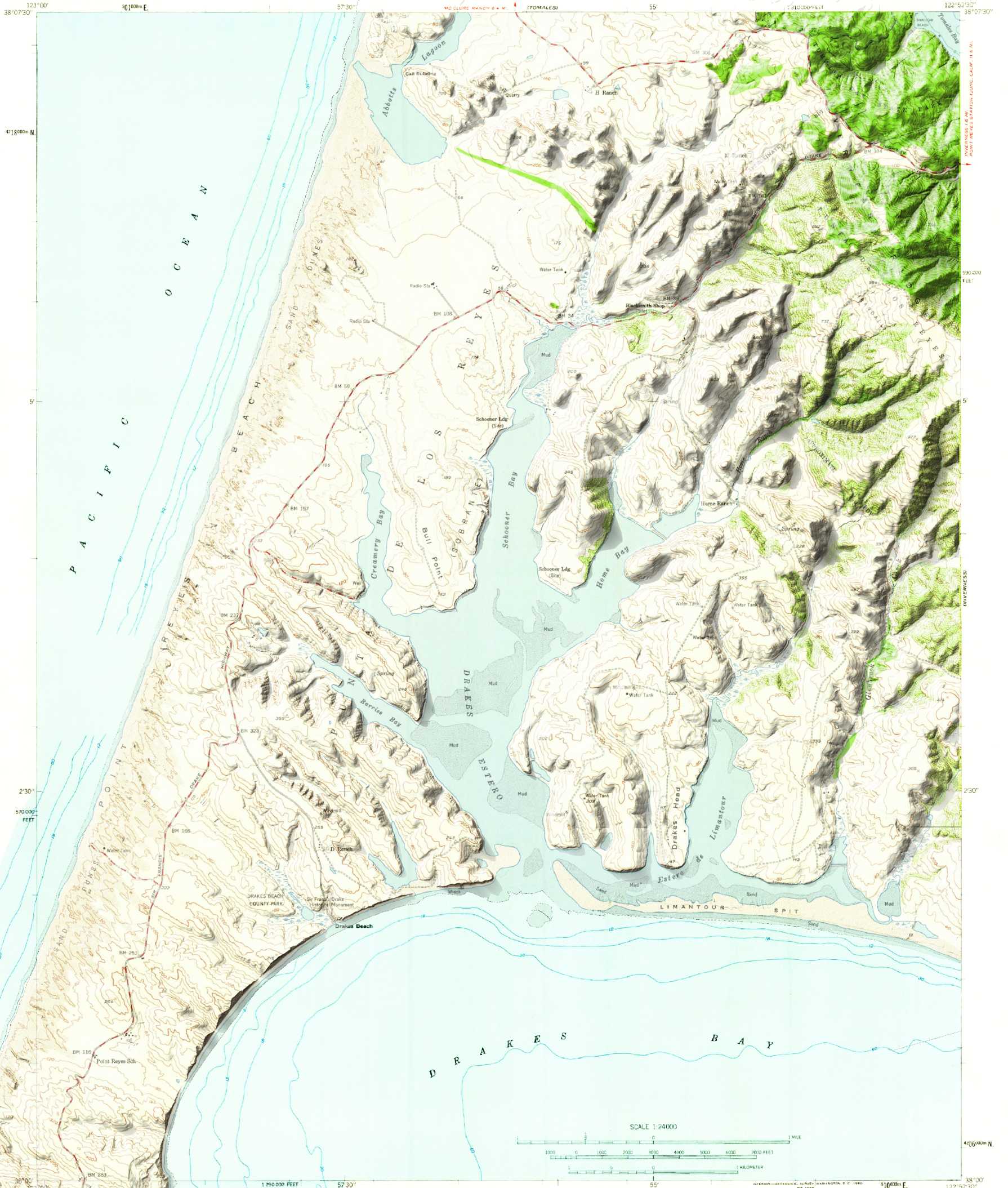
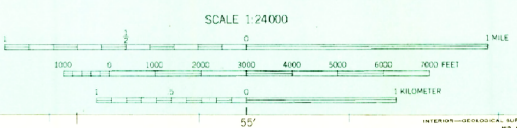


UNITED STATES  
DEPARTMENT OF THE INTERIOR  
GEOLOGICAL SURVEY

DRAKES BAY QUADRANGLE  
CALIFORNIA, MARIN CO.  
7.5 MINUTE SERIES (TOPOGRAPHIC)  
SW/4 POINT REYES IS. QUADRANGLE



Mapped, edited, and published by the Geological Survey  
Control by USGS and USC&GS  
Topography from aerial photographs by multicolor methods  
Aerial photographs taken 1952. Field check 1953  
Hydrography compiled from USC&GS Charts 5599 and 5603.  
Polyconic projection. 1927 North American datum  
10,000-foot grid based on California coordinate system, zone 3  
1000-meter Universal Transverse Mercator grid ticks,  
zone 10, shown in blue



CONTOUR INTERVAL 40 FEET  
DOTTED LINES REPRESENT HALF-INTERVAL CONTOURS  
EARTH IS MEAN SEA LEVEL  
DEPTH CURVED IN FEET - DATUM IS MEAN LOWER LOW WATER  
SHORELINE SHOWN REPRESENTS THE APPROXIMATE LINE OF MEAN HIGH WATER  
THE AVERAGE RANGE OF TIDE IS APPROXIMATELY 6 FEET

ROAD CLASSIFICATION  
Medium duty ——— Light duty ———  
USGS Unimproved dirt ———  
Historical File  
Topographic Division

U.S.G.S. FILE COPY  
DRAKES BAY, CALIF.  
SW/4 POINT REYES IS. QUADRANGLE  
N 3820 - W 12252 5/7.5  
1953

APPROXIMATE MEAN  
MAGNETIC NORTH  
77°  
THIS MAP COMPLIES WITH NATIONAL MAP ACCURACY STANDARDS  
FOR SALE BY U. S. GEOLOGICAL SURVEY, DENVER 25, COLORADO OR WASHINGTON 25, D. C.  
A FOLDER DESCRIBING TOPOGRAPHIC MAPS AND SYMBOLS IS AVAILABLE ON REQUEST

194 96 250 151

POINT REYES STATION, CALIF., 11 8 9

500 000  
FEET

1000 000  
FEET

2 30'

4 06 00m N

38 00'

122 52 30'

194 96 250 151

6055